

# Basic Groove - Bass Drum Variations (8th note)

Drum set lessons by Yentl Doggen

(1/2)

## 1. Basic groove:

The diagram shows a musical staff in 2/4 time with a bass drum line and a snare line. The bass drum line consists of quarter notes on the first and third beats of each measure. The snare line consists of quarter notes on the second and fourth beats of each measure. Arrows point to the eighth notes in the bass drum line. To the right is a drum set diagram with four cymbals, a snare drum, and four tom-toms.

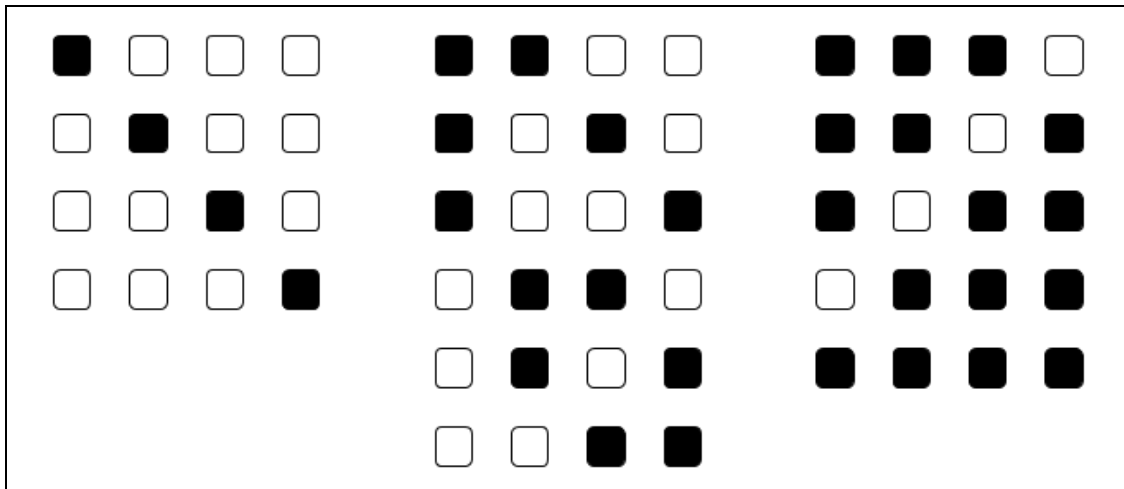
## 2. Bass drum variations (8th note)

The diagram shows four rows of musical notation and corresponding drum set diagrams. Each row is in 2/4 time and consists of two measures. The first measure of each row has a bass drum line with quarter notes on the first and third beats. The second measure has a bass drum line with quarter notes on the second and fourth beats. The notation is repeated four times (x4). The drum set diagrams consist of four squares representing the bass drum. The first row has the first square filled black. The second row has the second square filled black. The third row has the third square filled black. The fourth row has the fourth square filled black.

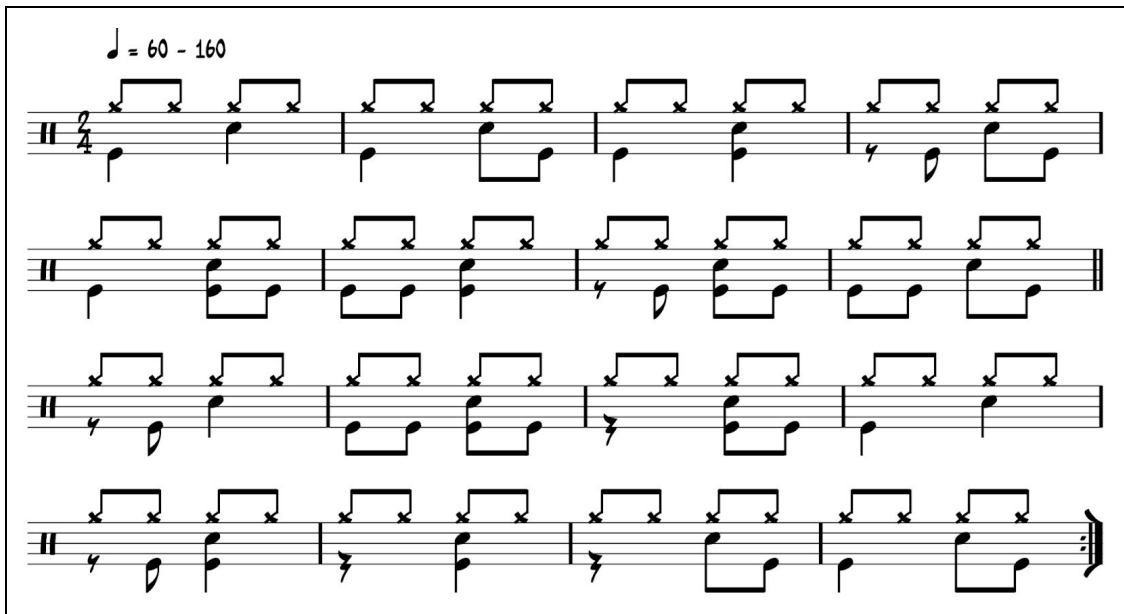
# Basic Groove - Bass Drum Variations (8th note)

Drum set lessons by Yentl Doggen

(2/2)



### 3. Reading exercise



### 4. Play random (8th note) bass drum variations.