

Basic Groove - Adding the Left Foot

Drum set lessons by Yentl Doggen

(1/2)

1. Basic groove:

The image shows a musical staff in 2/4 time with a key signature of one flat. The notation consists of two measures. The first measure has a quarter note on the bass line and a quarter rest on the treble line. The second measure has a quarter note on the bass line and a quarter note on the treble line. Arrows point to the notes in both measures. To the right is a diagram of a drum set with four circles representing cymbals and four diamonds representing hi-hats. The top two circles are marked with 'x' and the bottom two with 'o', indicating the placement of the notes in the groove.

2. Adding the Left Foot (8th note variations)

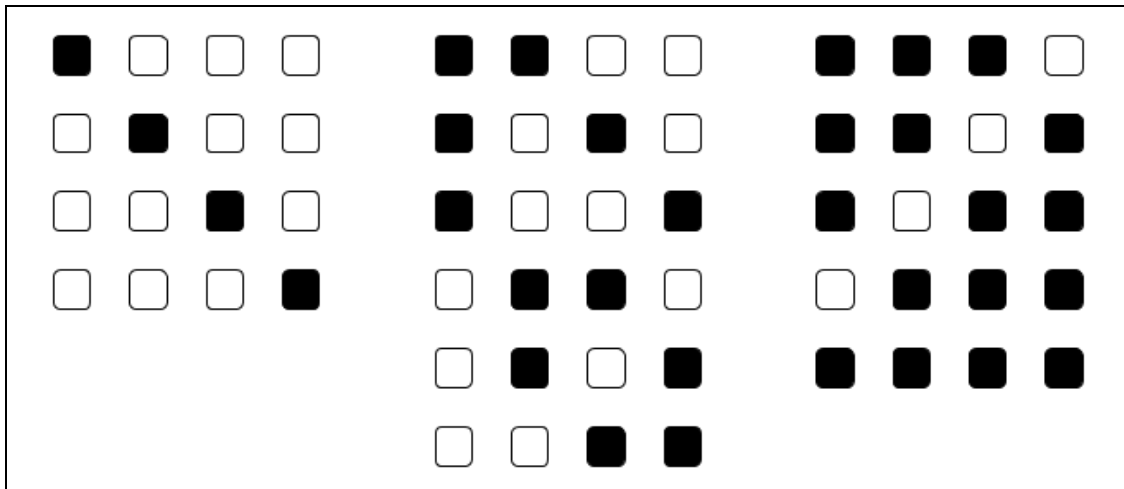
The image shows four variations of the basic groove, each with a musical staff and a corresponding drum set diagram. The musical staff shows the right hand part of the groove, and the drum set diagram shows the left foot part. The variations are:

- 1. Right hand: quarter note, quarter note, quarter note, quarter note. Left foot: quarter note, quarter note, quarter note, quarter note. Diagram: [Black square] [White square] [White square] [White square]
- 2. Right hand: quarter note, quarter note, quarter note, quarter note. Left foot: quarter note, eighth note, eighth note, quarter note. Diagram: [White square] [Black square] [White square] [White square]
- 3. Right hand: quarter note, quarter note, quarter note, quarter note. Left foot: quarter note, eighth note, eighth note, quarter note. Diagram: [White square] [White square] [Black square] [White square]
- 4. Right hand: quarter note, quarter note, quarter note, quarter note. Left foot: quarter note, eighth note, eighth note, quarter note. Diagram: [White square] [White square] [White square] [Black square]

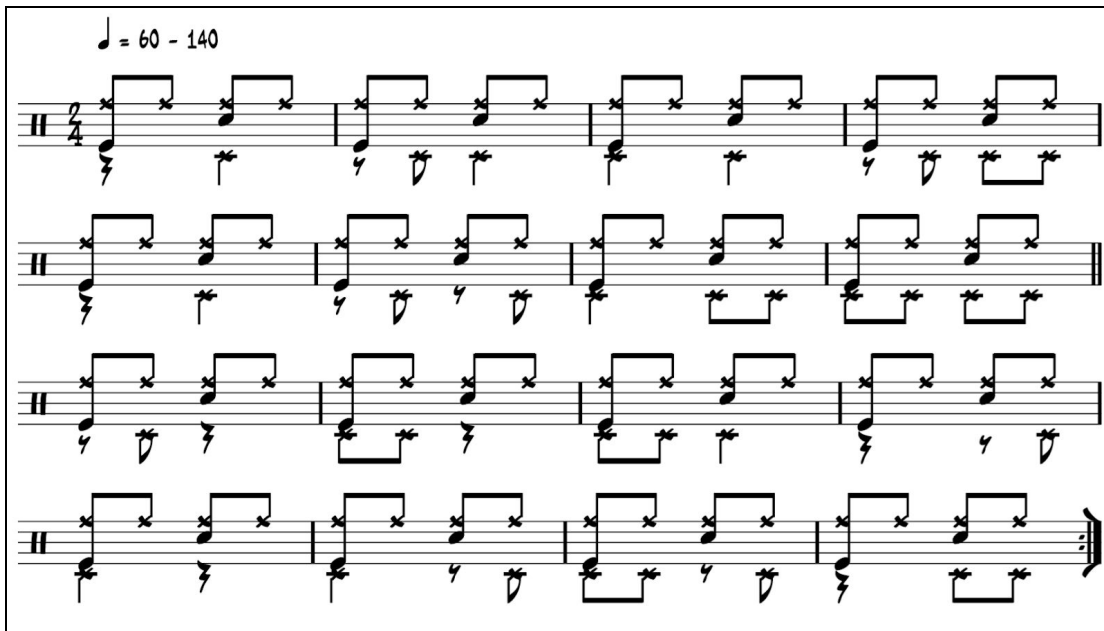
Basic Groove - Adding the Left Foot

Drum set lessons by Yentl Doggen

(2/2)



3. Reading exercise



4. Play random (8th note) left foot variations.